

JUNXING PPR PIPE & FITTING

JUNXING PIPE FOR
BETTER LIFE!

Tianjin Junxing Pipe Group Co., Ltd.

Address: No.1, Kaiyuan Road, Fuyuan Economic Development Area, Wuqing District, Tianjin, 301701China

Tel: 0086-22-84783371 / 0086-22-84783741

Fax: 0086-22-24559615

Email: info@junxingpipe.com

Website: www.junxingpipe.com; www.tjxgy.com



China Well-known
Trademark

TIANJIN JUNXING PIPE
GROUP CO., LTD.

JUNXING PIPE FOR BETTER LIFE



CONTENTS >>>

INTRODUCTION OF JUNXING	02-03
PRODUCTION	05
DEVELOPMENT EFFORTS	06
GLOBAL PARTNER	07
PPR HOT/COLD WATER PIPE	08-09
PPR-FB-PPR PIPE	10-11
PPR-AL-PPR PIPE	12-13
PP-R FITTINGS	15-20
NANO ANTI-BACTERIAL PPR PIPE	22-23
βPP-R FITTINGS	24-28



China Well-known
Trademark

INTRODUCTION OF JUNXING

JUNXING PIPE GROUP CO., LTD.

Junxing Pipe Group Co., Ltd is a complex high technology enterprise which integrates research and development of new products, manufacture of pipes and fittings, municipal and mechanical equipments, installation of petrochemical pipes and fountain lighting, import and export trade and marketing. Junxing is vice president of China Plastics Processing Industry Association, president of Shandong chamber of commerce in Tian Jin, vice president of Tianjin building materials association and plastic industry association. Junxing is one of the most famous pipe manufacturing enterprises in China; it plays a leading role in pipe industry in Tian Jin.

In 2009, Junxing was recognized as Famous Brand of China by State Administration for Industry and Commerce. In 2010, it came into being top 20 brands in plastic pipe industry.

Furth more, Junxing obtains many honors, National Inspection-exemption Products, famous brand in Tian Jin, new and high-tech enterprise in Tian Jin, top 10 brands of floor heating pipes in China.

Junxing Pipe Group is located in Fu Yuan Economic Development Area in Wu Qing District, its registered capital is 3200million, processes production plant 76thousand square meters, over 200 sets of equipments for production, inspection and experiment. We produce more than 20 series of pipes and fittings made of PP-R, PB, PE, PE-RT, PE-X, HDPE, RDPAP, which are applied in water supply and drainage, heat supply and transportation of gas. Our company based on domestic market, and develop broad sales network all over the world.



ENTERPRISE CULTURE:

Company aims:

Honesty and trustworthiness, good quality and customer satisfaction.

Management philosophy:

Innovation of management, technology and products.

Strategic objectives:

Constant pursuits, innovative development.



PRODUCTION >>>

Jun Xing has powerful manufacture capacity, owns advanced manufacturing equipments and techniques, automatic production control system, and excellent test methods and equipments, all these make it possible to provide high-quality pipes and fittings.



DEVELOPMENT EFFORTS

According to standard, our company formulates strict test regulations to ensure that products passing rate of 100%. in the Product Check Centre, We have over 20 test instruments which have reached the leading domestic level.



GLOBAL PARTNER >>>

Junxing is based on domestic market, developing sales network all over the world. we have already exported to Australia, Canada, New Zealand, Nigeria, Pakistan, Russia, UK, USA, South Africa, Tanzania, Egypt, Zakhstan, Monglia, Bangladesh, etc.

Over the decades, Junxing has come to be acknowledged as a reliable partner, Sincerely hope we can establish win-win cooperation in near future.

Junxing pipe for better life!



PPR HOT/COLD WATER PIPE >>>

Junxing manufactures PPR Pipes for hot/cold water installations. Our PPR pipes are made of the highest quality PPR material, which is tested under extreme conditions & conforms to global quality standards for quality; our PPR pipes are reliable and designed to give levels of performance in the face of the harshest of elements.

Conforming to world-class standards of quality, they are extremely reliable & offer convenient & reliable installation in any plumbing system.

Technical specification:

- Standard: GB/T18472, ISO15874, DIN 8077 8088
- Color: green, grey and white
- Length: 4m/pc or customerized

Unit: mm

Outer diameter(mm)-dn	Pipe series			
	S5	S4	S3.2	S2.5
	wall thickness(mm) en			
20	2.0	2.3	2.8	3.4
25	2.3	2.8	3.5	4.2
32	2.9	3.6	4.4	5.4
40	3.7	4.5	5.5	6.7
50	4.6	5.6	6.9	8.3
63	5.8	7.1	8.6	10.5
75	6.8	8.4	10.3	12.5
90	8.2	10.1	12.3	15.0
110	10.0	12.3	15.1	18.3
125	11.4	14.0	17.1	20.8
140	12.7	15.7	19.2	23.3
160	14.6	17.9	21.9	26.6
200	18.2	22.2	27.9	33.3

Competitive Advantages of the product:

- High Temperature Resistance: the maximum sustained working temperature is up to 70 Degrees Celsius, the maximum transient temperature is up to 95 Degrees Celsius.
- Heat Preservation: low thermal conductivity which is only 1/1500 of brass pipe, and 1/250 of steel pipe.
- Non-toxic: no heavy metal additives would not be covered with dirt or contaminated by bacterium.
- Corrosion Resistant: resist chemical matters or electron chemical corrosion.
- Lower Installation Costs: light weight.

Applications:

- Cold and hot water supply
- Heating system including flooring heating, wall
- Heating and radiant system
- Central air conditioning system
- Industrial liquids transportation



PPR-FB-PPR PIPE >>>

The structure of the JUNXING PPR-FB-PPR pipes incorporates three layers: the inner and the outer polypropylene (PPR) layers filled with special additives and PPR-to-PPR middle fiberglass layer.

The outer layer is made of PPR-copolymer which can be easily treated during conventional pipe welding. It contains special agent additives making the pipe ultraviolet-resistant.

The second, middle layer of the pipes is formed by composite compounds consisting of PPR-copolymer and FB-fiberglass. Such composition provides for improving all technical features of the pipes including mechanical strength and resistance against exposure to high and low environmental temperatures.

Applications:

- Distribution for cool and hot water;
- Duct for drinkable water system;
- Pipes for kinds of high-temperature and low-temperature heating system;
- Pipes for heating and cooling settings in solar energy system;
- Connecting pipe for air conditioners.

Technical specification:

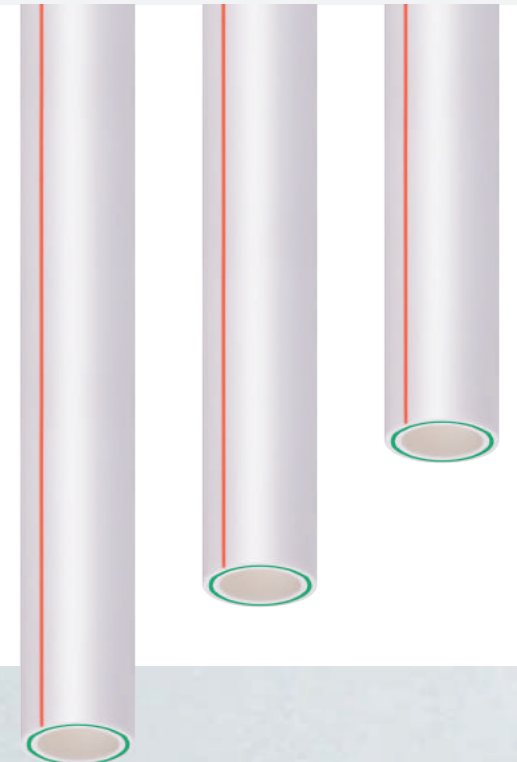
- Standard: CJ/T258-2007
- Color: grey and white
- Length: 4m or as request

Unit: mm

Outer diameter(mm)-dn	Pipe series		
	S4	S3.2	S2.5
	wall thickness (mm) en		
20	2.3	2.8	3.4
25	2.8	3.5	4.2
32	3.6	4.4	5.4
40	4.5	5.5	6.7
50	5.6	6.9	8.3
63	7.1	8.6	10.5
75	8.4	10.3	12.5

Competitive Advantages of the product:

- Greatly reduced linear expansion coefficient, 30% of that of PP-R, which is close to that of the stable composite pipes.
- Higher strength and stability of dimension.
- Greatly improved resistant to pressure, it can bear 25% more pressure load than PP-R under the same service condition.
- Improved resistant to impulse under low temperature.
- Excellent resistance to high temperature. It can be used in 90°C for long term.
- Socket fusion connection with PP-R fittings, credible and convenient.
- Smooth and sanitary, being good selection for drinkable water system.



PPR-AL-PPR PIPE >>>

PPR-AL-PPR composite pipe is composite pipe of five layers, inside and outside layers of which are made of PP-R, tightly bonded with melt adhesive to the mid-layer of aluminum core which is longitudinally welded in a butt-welded or overlap-welded way, this kind of pipe is the perfect union of metal and the plastic ones.

Applications:

- Underfloor heating;
- Heating system of caliduct and wall, the equipment for snow melting in cold regions;
- Heat and cold pipes for life, solar energy water heater, irrigation engineer in agriculture;
- Pipes for coal gas and natural gas, air-condition and blower;
- Pipes for electric wire and cable;
- Pipes for oil and industrial liquids transportation.

Technical specification:

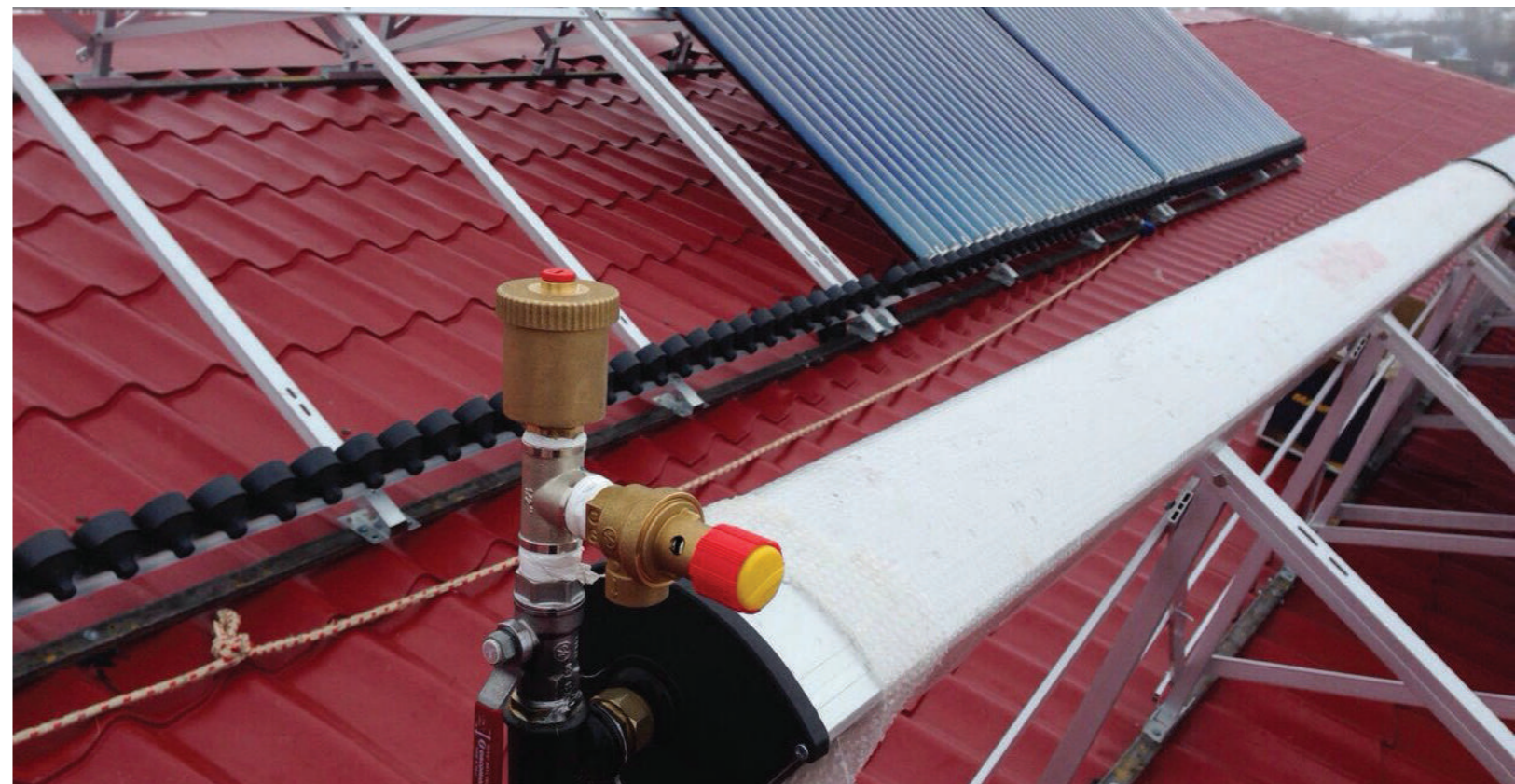
- Standard: ISO 15874
- Color: grey, white or other colors according to national standard
- Length: 4m or other length upon request

Unit: mm

OD (mm)	Thickness of Aluminum layer	S4		S3.2		S2.5	
		Inner layer thickness	tatal thickness	Inner layer thickness	tatal thickness	Inner layer thickness	tatal thickness
20	0.15	2.3	3.2	2.8	3.7	3.4	4.2
25	0.15	2.8	3.9	3.5	4.6	4.2	5.1
32	0.20	3.6	4.6	4.4	5.5	5.4	6.3
40	0.20	4.5	5.6	5.5	6.7	6.7	7.7
50	0.20	5.6	6.7	6.9	8.0	8.3	9.3
63	0.25	7.1	8.4	8.6	10.0	10.5	11.5
75	0.30	8.4	9.6	10.3	11.5	12.5	13.5
90	0.35	10.1	11.5	12.3	13.7	15.0	16.0
110	0.35	12.3	13.7	15.1	16.6	18.3	19.8

Competitive Advantages of the product:

- Compared with the metal pipe, the composite pipe has the same strength, easy to bend, reluctant to retain former shape;
- Super properties of high temperature, high pressure and corrosion resistance;
- Smooth inner surface of the pipe reduces resistance to the fluids. The ability to conduct water is 30% more efficient;
- Good property of heat preservation, heat conduction coefficient is 0.45W/m.k, which is much less than metal pipes and it can save insulation materials outside the pipe;
- Easy to cut and install. It can be connected with special fittings instead of screw fittings; small diameter pipes can be rolled and packaged. Once received the pipes (bent radius >5d) can be cut to desired length and simply bent in order than many directional parts such as elbows or angles ate no longer recessing very convenient to install, much time and labor cost can be saved;
- Life pan of The composite pipe is more than 50 years.





We have a widely product range and can produce

S5 to S2 .5

series of global standard size of

20mm to 200 mm.



PP-R FITTINGS >>>

EQUAL COUPLING



Specification(mm)	Packing (pcs/ctn)
20	700
25	420
32	240
40	175
50	112
63	72
75	60
90	36
110	24
125	20
140	12
160	12
200	

REDUCING COUPLING



Specification(mm)	Packing (pcs/ctn)
25*20	500
32*20	300
32*25	300
40*20	210
40*25	210
40*32	180
50*20	140
50*25	140
50*32	140
50*40	90
63*25	90
63*32	90
63*40	90
63*50	60
75*40	99
75*50	99
75*63	66
90*50	60
90*63	60
90*75	36
110*63	24
110*75	24
110*90	24
125*75	18
125*90	18
125*110	16
140*90	16
140*110	12
140*125	12
160*110	12
160*125	8
160*140	8
200*110	
200*160	



90° EQUAL ELBOW



Specification(mm)	Packing (pcs/ctn)
20	400
25	280
32	150
40	100
50	48
63	28
75	32
90	18
110	12
125	8
140	6
160	4
200	

90° REDUCING ELBOW



Specification(mm)	Packing (pcs/ctn)
25*20	300
32*20	280
32*25	210
40*25	160
40*32	120
50*32	80
50*40	60
63*50	36

PP-R FITTINGS >>>

45° EQUAL ELBOW



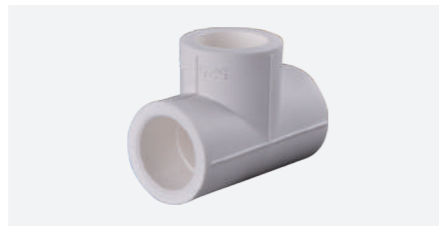
Specification(mm)	Packing (pcs/ctn)
20	500
25	300
32	150
40	90
50	60
63	40
75	40
90	21
110	12
125	10
140	6
160	6

PIPE CAP



Specification(mm)	Packing (pcs/ctn)
20	1120
25	800
32	420
40	260
50	150
63	100
75	100
90	64
110	
125	
140	
160	

EQUAL TEE



Specification(mm)	Packing (pcs/ctn)
20	300
25	200
32	120
40	70
50	42
63	28
75	24
90	12
110	10
125	6
140	4
160	3
200	

REDUCING TEE



Specification(mm)	Packing (pcs/ctn)
25*20*20	240
32*20*25	150
32*25*20	150
32*25*25	120

REDUCING TEE



Specification(mm)	Packing (pcs/ctn)
25*20	240
32*20	150
32*25	120
40*20	90
40*25	100
40*32	80
50*20	64
50*25	64
50*32	48
50*40	48
63*20	32
63*25	32
63*32	32
63*40	32
63*50	28
75*40	32
75*50	32
75*63	26
90*50	18
90*63	18
90*75	18
110*63	12
110*75	12
110*90	12
125*75	8
125*90	6
125*110	6
140*90	6
140*110	4
140*125	4
160*110	4
160*125	4
160*140	4
200*110	
200*160	

PP-R FITTINGS >>>

We produce PPR pipe fittings by imported material, and has a nice appearance with size from 20mm to 200mm. It is connected by Hot-fusion method, which will be convenient for the construction, ensures the easily repaired and safety of the whole pipe system.



PP-R FITTINGS >>>

REDUCING TEE



Specification(mm)	Packing (pcs/ctn)
20*25*20	240
20*32*20	200
25*32*25	120

CROSS



Specification(mm)	Packing (pcs/ctn)
20	240
25	160
32	90

SIX-WAY FITTING



Specification(mm)	Packing (pcs/ctn)
20	60
25	40

FLANGE CONNECTOR



Specification(mm)	Packing (pcs/ctn)
40	150
50	90
63	70
75	63
90	54
110	24
125	18
140	16
160	18
200	

MALE COUPLING



Specification(mm)	Packing (pcs/ctn)
20*1/2"	170
20*3/4"	140
25*1/2"	130
25*3/4"	120
25*1"	50
32*3/4"	120
32*1"	50
40*1.1/4"	34
50*1.1/2"	28
63*2"	18

FEMALE COUPLING

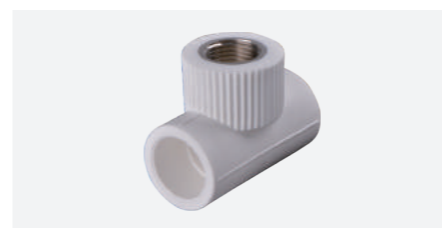


Specification(mm)	Packing (pcs/ctn)
20*1/2"	200
20*3/4"	140
25*1/2"	140
25*3/4"	130
32*3/4"	120
32*1"	60
40*1.1/4"	36
50*1.1/2"	28
63*2"	18

PP-R FITTINGS >>>



FEMALE TEE



Specification(mm)	Packing (pcs/ctn)
20*1/2"	100
25*1/2"	80
25*3/4"	60
32*1/2"	52
32*3/4"	48
32*1"	
40*1/2"	52
40*3/4"	48

MALE TEE



Specification(mm)	Packing (pcs/ctn)
20*1/2"	100
25*1/2"	70
25*3/4"	60

ELBOW-PLATE



Specification(mm)	Packing (pcs/ctn)
20*1/2"	100
20*3/4"	80
25*1/2"	80
25*3/4"	60

FEMALE ELBOW



Specification(mm)	Packing (pcs/ctn)
20*1/2"	120
25*1/2"	90
25*3/4"	80
32*3/4"	60
32*1"	40

MALE ELBOW



Specification(mm)	Packing (pcs/ctn)
20*1/2"	120
25*1/2"	90
25*3/4"	80
32*3/4"	50
32*1"	40



PP-R FITTINGS >>>

BRASS BALL VALVE



Specification(mm)	Packing (pcs/ctn)
20	50
25	35
32	30
40	24
50	10
63	8

BRASS BALL VALVE



Specification(mm)	Packing (pcs/ctn)
20	50
25	40
32	25
40	12
50	8
63	6

FEMALE UNION



Specification(mm)	Packing (pcs/ctn)
20*1/2"	130
25*3/4"	90
32*1"	50
40*1.1/4"	45
50*1.1/2"	30
63*2"	14

DOUBLE PPR HEAD UNION



Specification(mm)	Packing (pcs/ctn)
20	100
25	70
32	40

MALE UNION



Specification(mm)	Packing (pcs/ctn)
20*1/2"	120
20*3/4"	
25*1/2"	
25*3/4"	80
25*1"	
32*1"	45
40*1.1/4"	30
50*1.1/2"	22
63*2"	14

MALE BALL VALVE



Specification(mm)	Packing (pcs/ctn)
20*1/2"	70
25*3/4"	50
32*1"	25

BYPASS BEND



Specification(mm)	Packing (pcs/ctn)
20	210
25	120
32	80

FEMALE BALL VALVE



Specification(mm)	Packing (pcs/ctn)
20*1/2"	70
25*3/4"	50
32*1"	25



JUNXING PP-R PIPES AND PIPE FITTINGS ARE WIDELY USED IN SUCH AREAS AS DELIVERY OF DRINKING WATER,

PRODUCTION AND DELIVERY SYSTEM OF PURIFIED WATER AND DRINKS, TRANSPORTATION OF CHEMICAL FLUIDS, HEATING PIPES, CIRCULATION SYSTEM OF HOT WATER, ETC.

NANO ANTI-BACTERIAL PPR PIPE >>>

Nano is the statutory measurement in the name of the measuring unit, its unit symbols is nm. 1nm equal to one thousand millionth of a meter, namely as long as 10 hydrogen atoms in straight line. When the particle size of the material is 0.1-100nm, collectively called nanophase materials.

At present the nanometer material in plastic can improve the material's barrier property, the mechanical strength, thermal deformation temperature and improve the material's low temperature resistance, at the same time, strengthened the antioxidant brittle relaxing and ultraviolet prevention ability, greatly improve the service life of the pipe.

Applications:

- Purified water, drinking water system;
- Solar heating and cooling equipment system;
- Beverage and liquid medicine production system;
- Industrial compressed air pipe network;
- Caliduct, floor and wall heating equipment;
- Indoor and outdoor pipe of exposed installation;
- Oxygen pipe in hospital;
- Other industrial and agricultural pipe.

Technical specification:

- Standard: Q/12WQ5066-2011
- Length: 4m or as request

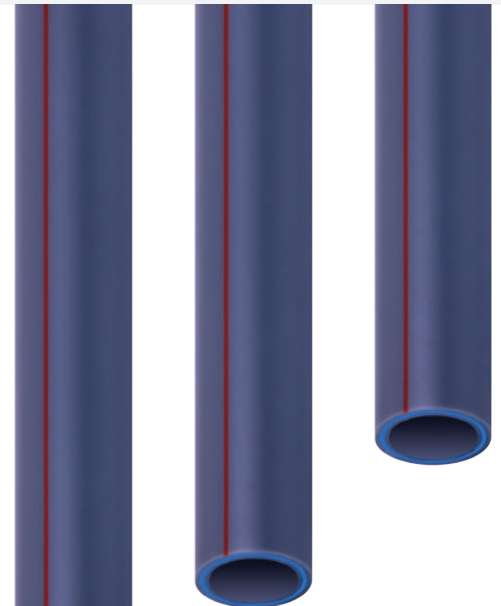
Unit: mm

Outer diameter(mm)-dn	Pipe series	
	S4	S3.2
	wall thickness (mm) en	
20	2.3	2.8
25	2.8	3.5
32	3.6	4.4
40	4.5	5.5
50	5.6	6.9
63	7.1	8.6
75	8.4	10.3



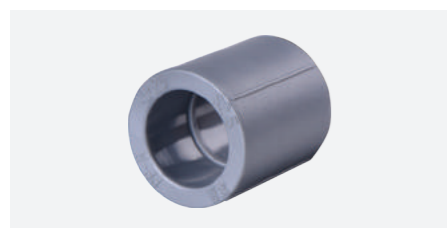
Competitive Advantages of the product:

- Sanitary & non-toxic;
- Corrosion resistant & not scaling;
- Elegant appearance;
- Antimicrobial. The sterilization rate of escherichia coli and golden staphylococcus is over 90%;
- In long-term work water temperature during civil constructional engineering, water temperature is less than 70°C, max temperature is less than 80°C, system pressure reaches 0.8Mpa;
- Heat preservation & energy efficient. The transfer-heat coefficient of our product is only 0.5% of metallic pipe;
- Light weight. Only 1/8 of steel. Be convenient in transportation and installation;
- Apply thermal melting connection, It's easy, reliable, environmental, safe;
- Long service life. The working life is approximately 50 years under the normal pressure and temperature.



βPP-R FITTINGS >>>

EQUAL COUPLING



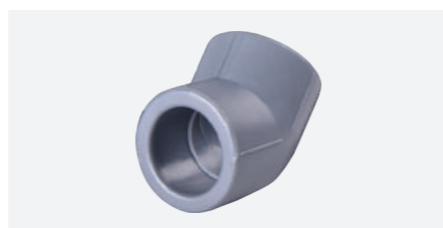
Specification(mm)	Packing (pcs/ctn)
20	700
25	420
32	240
40	175
50	112
63	72
75	60

90 DEGREE ELBOW



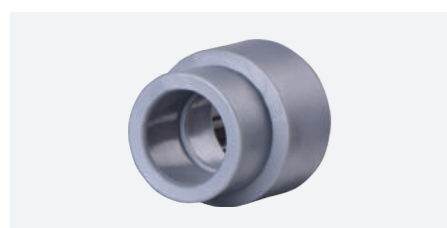
Specification(mm)	Packing (pcs/ctn)
20	400
25	280
32	150
40	100
50	48
63	28
75	32

45 DEGREE ELBOW



Specification(mm)	Packing (pcs/ctn)
20	500
25	300
32	150
40	90
50	60
63	40
75	40

REDUCING COUPLING



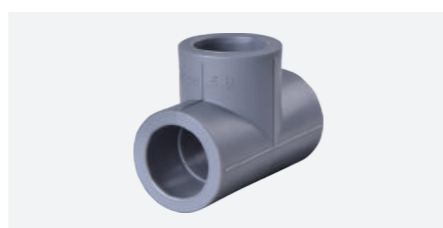
Specification(mm)	Packing (pcs/ctn)
25*20	500
32*20	300
32*25	300
40*20	210
40*25	210
40*32	180
50*20	140
50*25	140
50*32	140
50*40	90
63*25	90
63*32	90
63*40	90
63*50	60
75*40	99
75*50	99
75*63	66

90 REDUCING ELBOW



Specification(mm)	Packing (pcs/ctn)
25*20	300
32*20	280
32*25	210
40*25	160
40*32	120
50*32	80
50*40	60
63*50	36

EQUAL TEE



Specification(mm)	Packing (pcs/ctn)
20	300
25	200
32	120
40	70
50	42
63	28
75	24



βPP-R FITTINGS >>>

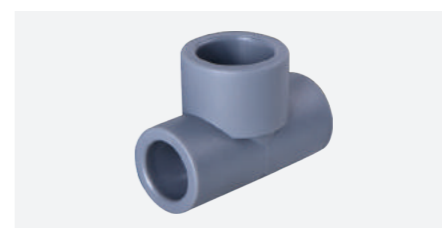


REDUCING TEE



Specification(mm)	Packing (pcs/ctn)
25*20	240
32*20	150
32*25	120
40*20	90
40*25	100
40*32	80
50*20	64
50*25	64
50*32	48
50*40	48
63*20	32
63*25	32
63*32	32
63*40	32
63*50	28
75*40	32
75*50	32
75*63	26

REDUCING TEE



Specification(mm)	Packing (pcs/ctn)
20*25*20	240
20*32*20	200
25*32*25	120

CROSS



Specification(mm)	Packing (pcs/ctn)
20	240
25	160
32	90

OVER BEND



Specification(mm)	Packing (pcs/ctn)
20	210
25	120
32	80

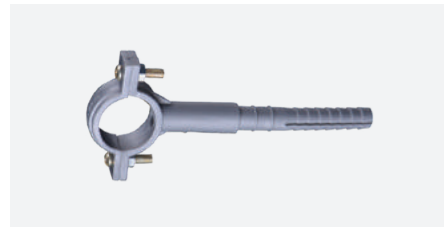
PIPE BRACKET



Specification(mm)	Packing (pcs/ctn)
20	900
25	900
32	600

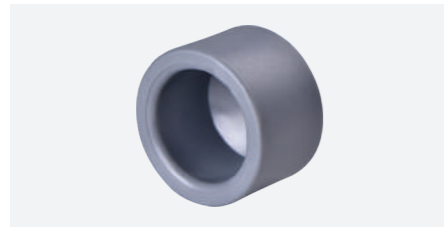
PP-R FITTINGS >>>

LONG PIPE CLAMP



Specification(mm)	Packing (pcs/ctn)
20	1000
25	900

CAP



Specification(mm)	Packing (pcs/ctn)
20	1120
25	800
32	420
40	260
50	150
63	100
75	100

MALE THREADED TEE



Specification(mm)	Packing (pcs/ctn)
20*1/2"	100
25*1/2"	70
25*3/4"	60

FEMALE THREADED ELBOW



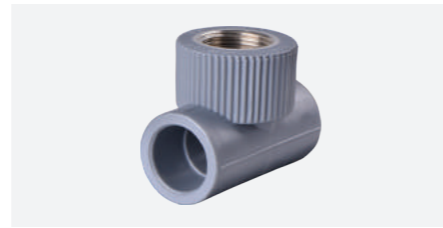
Specification(mm)	Packing (pcs/ctn)
20*1/2"	120
25*1/2"	90
25*3/4"	80
32*3/4"	60
32*1"	40

MALE THREADED ELBOW



Specification(mm)	Packing (pcs/ctn)
20*1/2"	120
25*1/2"	90
25*3/4"	80
32*3/4"	50
32*1"	40

FEMALE THREADED TEE



Specification(mm)	Packing (pcs/ctn)
20*1/2"	100
25*1/2"	80
25*3/4"	60
32*1/2"	52
32*3/4"	48
32*1"	
40*1/2"	52
40*3/4"	48
50*1.1/2"	28
63*2"	18

MALE THREADED COUPLING



Specification(mm)	Packing (pcs/ctn)
20*1/2"	170
20*3/4"	140
25*1/2"	130
25*3/4"	120
25*1"	50
32*3/4"	120
32*1"	50
40*1.1/4"	34
50*1.1/2"	28
63*2"	18

PP-R FITTINGS >>>

Junxing pipe for better life!

FEMALE THREADED COUPLING



Specification(mm)	Packing (pcs/ctn)
20*1/2"	200
20*3/4"	140
25*1/2"	140
25*3/4"	130
32*3/4"	120
32*1"	60
40*1.1/4"	36
50*1.1/2"	28
63*2"	18

MALE THREADED UNION



Specification(mm)	Packing (pcs/ctn)
20*1/2"	120
20*3/4"	
25*1/2"	
25*3/4"	80
25*1"	
32*1"	45
40*1.1/4"	30
50*1.1/2"	22
63*2"	14



PP-R FITTINGS >>>

UNION WITH BOTH END PLASTIC



Specification(mm)	Packing (pcs/ctn)
20	100
25	70
32	40

SINGLE MALE THREADED BRASS BALL VALVE



Specification(mm)	Packing (pcs/ctn)
20*1/2"	70
25*3/4"	50
32*1"	25

SINGLE FEMALE THREADED BRASS BALL VALVE



Specification(mm)	Packing (pcs/ctn)
20*1/2"	70
25*3/4"	50
32*1"	25

FEMALE THREADED UNION



Specification(mm)	Packing (pcs/ctn)
20*1/2"	130
25*3/4"	90
32*1"	50
40*1.1/4"	45
50*1.1/2"	30
63*2"	14

FUSION BRASS BALL VALVE



Specification(mm)	Packing (pcs/ctn)
20	50
25	40
32	25
40	12
50	8
63	6

HOT FUSION BRASS STOP VALVE



Specification(mm)	Packing (pcs/ctn)
20	50
25	35
32	30
40	24
50	10
63	8

